

► **AWX-241XSAXX****Applications:**

- * 868MHz LoRA Devices
- * ISM 915 MHz fixed and mobile Communication

Features:

- * $1/4\lambda$ Whip Antenna
- * Covers 868MHz band
- * SMA connector direct Mount
- * Meet RoHS/ REACH Compliance

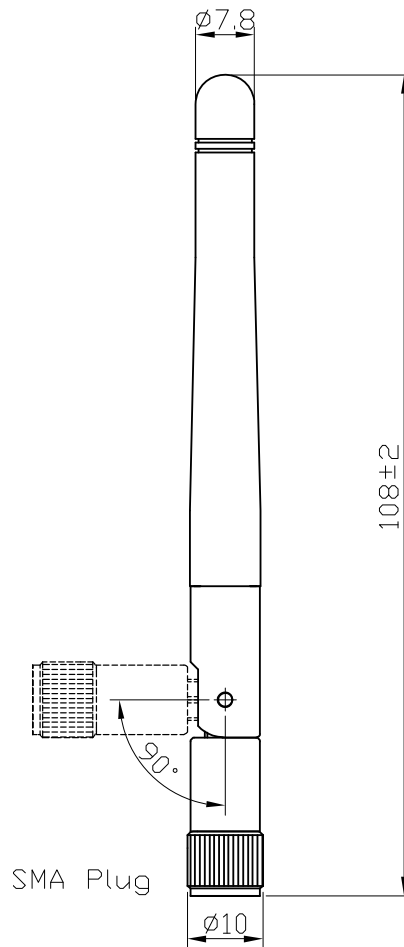


≡ Specification ≡

Electrical Data	
Frequency	868MHz
Impedance (Ω)	50 Ω
VSWR(\leq)	≤ 2.0
Gain(dBi)	≤ 2.0 dBi (With Test Ground)
Polarization	Vertical
Radiation	Omni
Wave Length,Type	$1/4\lambda$, Whip
Test Ground Size	118*90*30mm

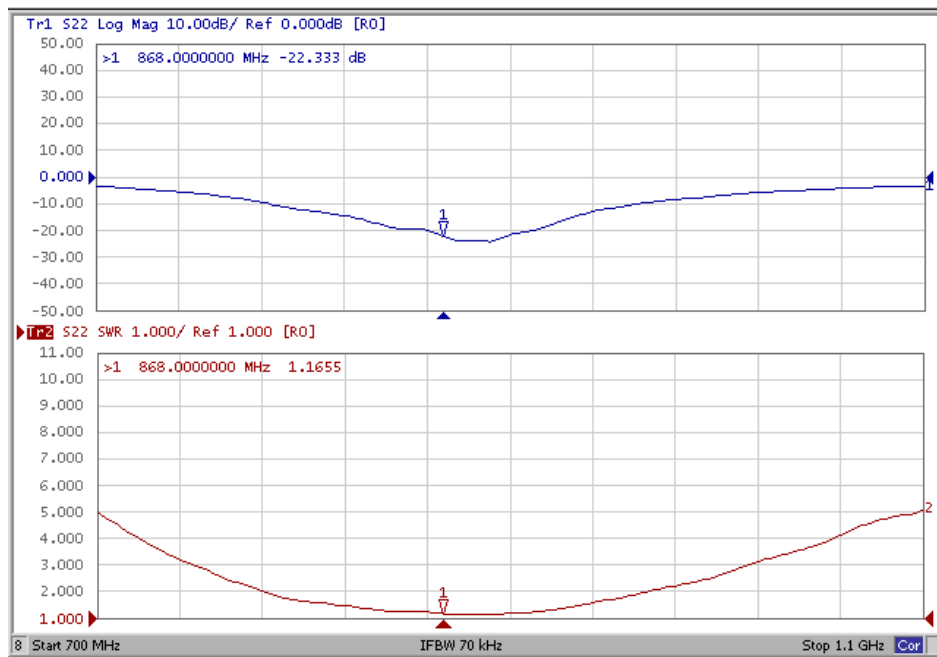
Mechanical Data	
Dimension (mm)	108mm
Weight	8.5g
Radome Material	TPE
Radome Color	Black
Connector	SMA Plug
Cable Type/ Length	RG316, 500mm
Operating Temperature	-20°C~+65°C
Storage Temperature	-30°C~+75°C
IP Level	IPx5

► Mechanical Drawing

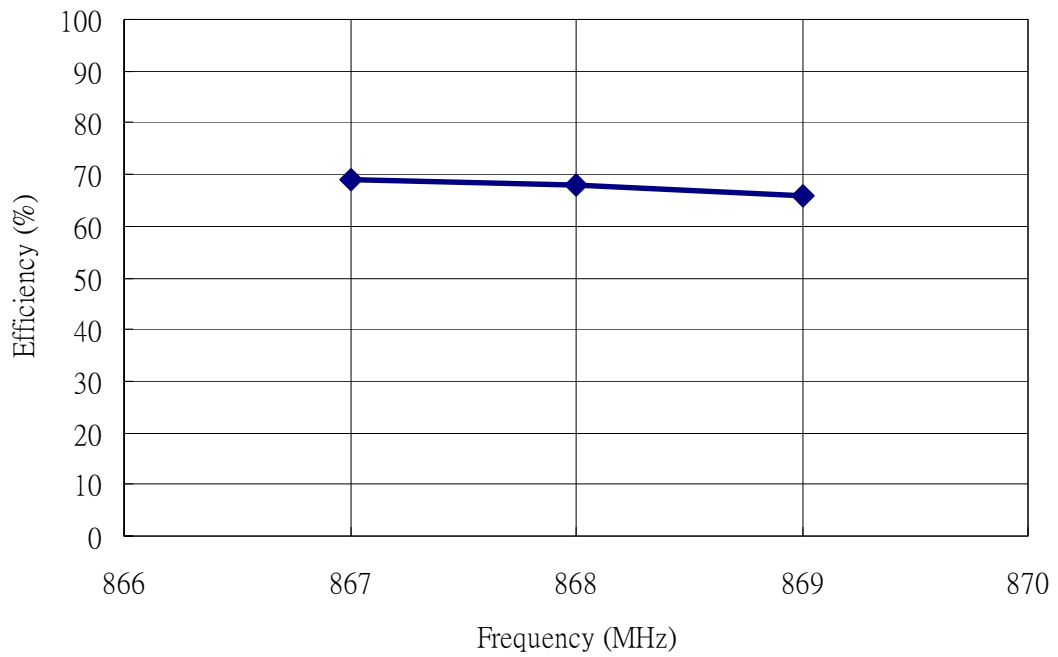


► Electrical Test

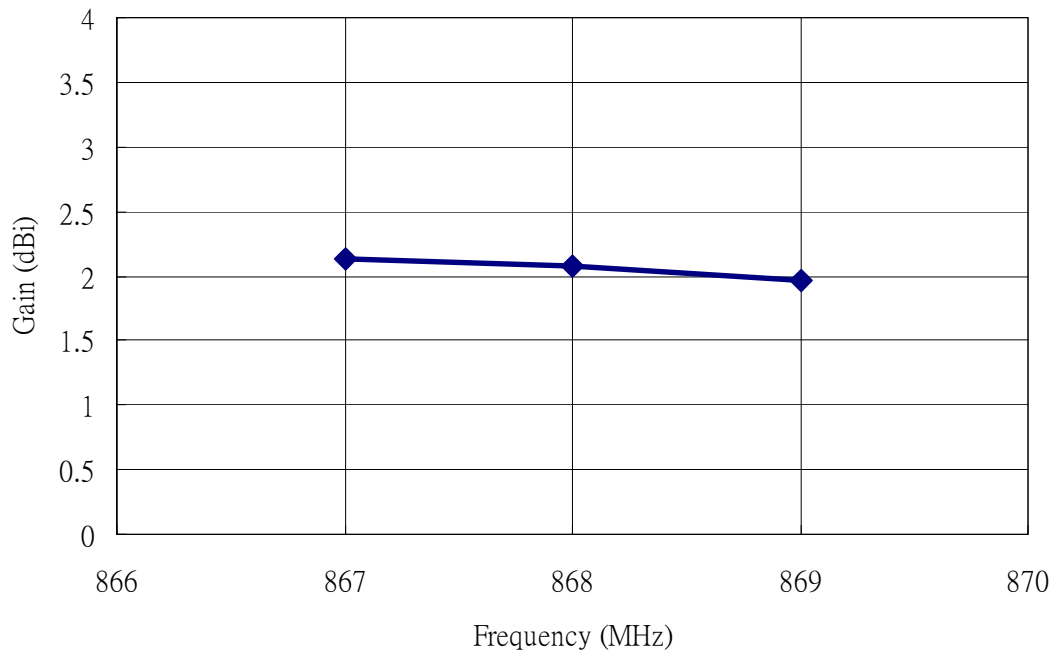
► V.S.W.R



► Efficiency

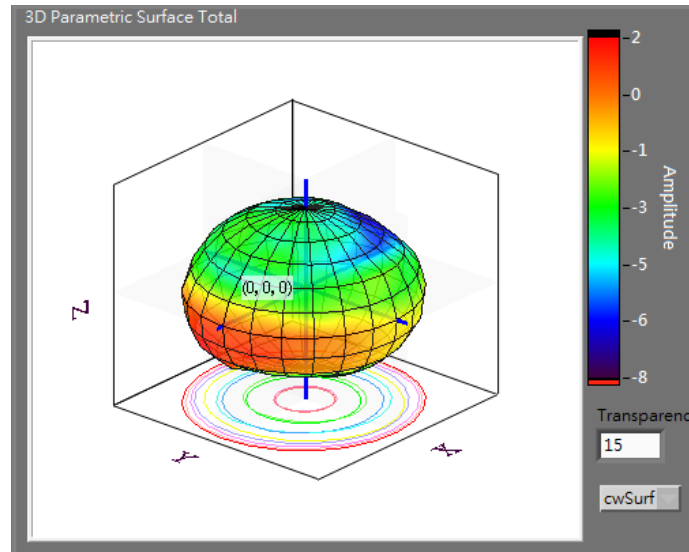


► Gain

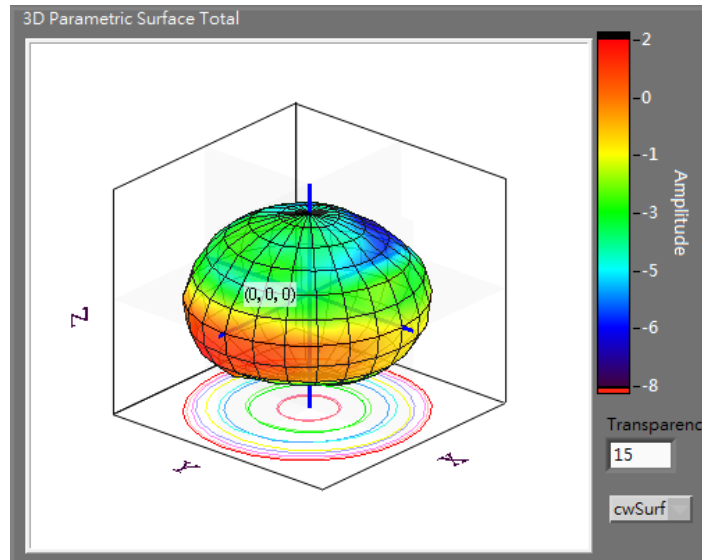


► E-PLANE / H-PLANE:

▶ 867MHz



▶ 868MHz



▶ 869MHz

